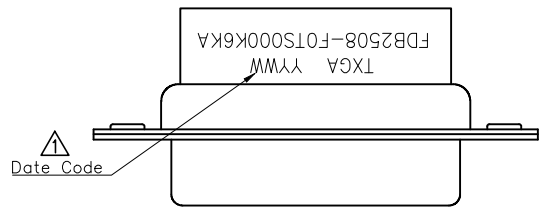


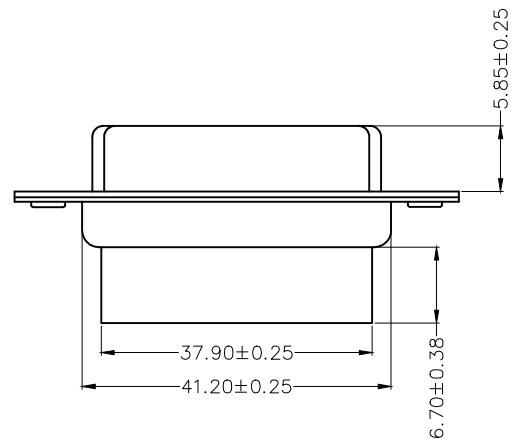
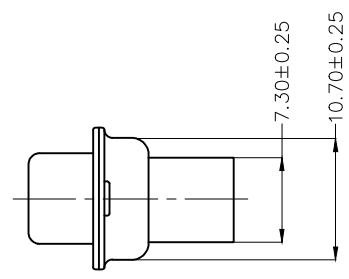
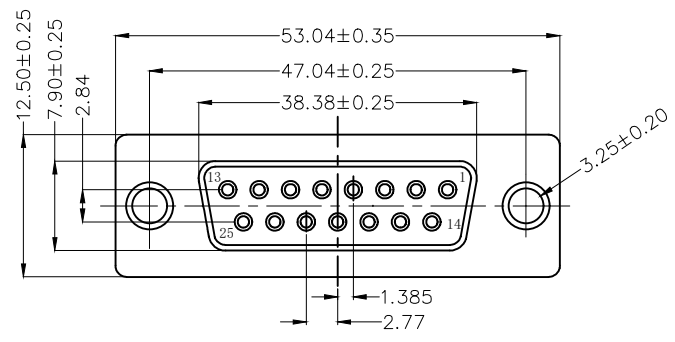
REV	LOCATIONS	DESCRIPTION	DATE	REVISER	APPD
1	▲	Add marking code	13/Jan/25	NICK	LEO



SPECIFICATIONS

Electrical
 Insulation Resistance: 3000 MΩ MIN
 Withstanding Voltage: 250V AC r.m.s
 Temperature Range—Operating: -45°C~+85°C

Material and Plating
 Housing: PBT (UL 94V-0) Black
 Front Shell: Spcc/ Nickel plated
 Back Shell: Spcc/ Tin plated



Ordering Information

FDB 25 08 - F0 T S 0 00 K6 K A
 1 2 3 4 5 6 7 8 9

1	Category FDB- D-SUB	2	Circuits 25	3	Distinction No. 08	4	Type F0-Female	5	Assembly Layout T-Terminal type
6	Entry Angle S-180° Vertical	7	Color-Resin K6-Black	8	Packaging K-Tray	9	Distinction Type A-A Type		

 THIRD ANGLE PROJECTION	GENERAL TOLERANCES (UNLESS SPECIFIED)		APPROVE BY FRANK	DATE 14/JUN/22	PART NO. FDB2508-F0T5000K6KA	ITEM NO. FDB2508	 Building Technology Cornerstone
	DESIGN UNITS Metric	X.±0.30	X.±5'	CHECKED BY CHERRY	DATE 14/JUN/22	TITLE D-SUB Connector 25Circuits Terminal type Female	
SCALE 5:1	SIZE A4	X.XX±0.25	.XX±1'	DRAWN BY MATT	DATE 14/JUN/22	THIS DRAWING CONTAINS INFORMATION THAT IS PROPRIETARY TO TXGA INDUSTRIAL ELECTRONICS(S.Z)CO.,LTD AND SHOULD NOT BE USED WITHOUT WRITTEN PERMISSION	
		X.XXX±0.10	.XXX±0.5'			REV 1	SHEET NO. 1/1

REV	LOCATIONS	DESCRIPTION	DATE	REVISER	APPD
1	▲	Add marking code	13/Jan/25	NICK	LEO

SPECIFICATIONS

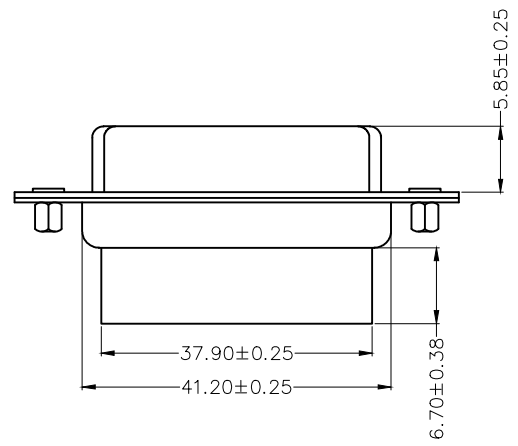
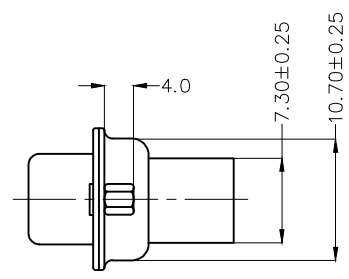
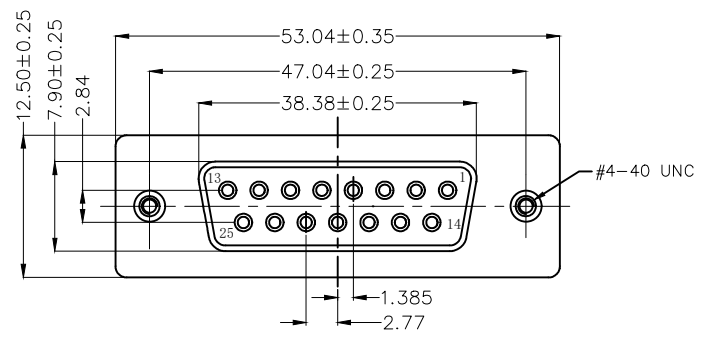
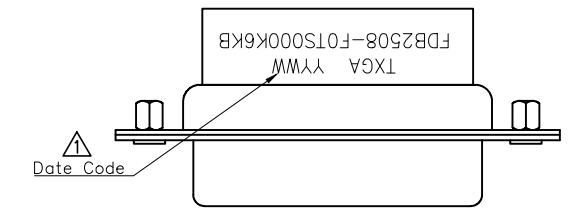
Electrical
 Insulation Resistance: 3000 MΩ MIN
 Withstanding Voltage: 250V AC r.m.s
 Temperature Range—Operating: -45°C~+85°C

Material and Plating
 Housing: PBT (UL 94V-0) Black
 Front Shell: Spcc/ Nickel plated
 Back Shell: Spcc/ Tin plated

Ordering Information

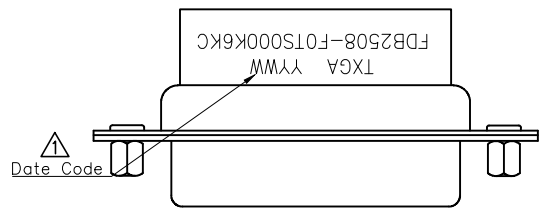
FDB 25 08 - F0 T S 0 00 K6 K B
 1 2 3 4 5 6 7 8 9

1	Category FDB- D-SUB	2	Circuits 25	3	Distinction No. 08	4	Type F0-Female	5	Assembly Layout T-Terminal type
6	Entry Angle S-180° Vertical	7	Color-Resin K6-Black	8	Packaging K-Tray	9	Distinction Type B-B Type		



 THIRD ANGLE PROJECTION	GENERAL TOLERANCES (UNLESS SPECIFIED)		APPROVE BY FRANK	DATE 14/JUN/22	PART NO. FDB2508-F0TS000K6KB	ITEM NO. FDB2508	 Building Technology Cornerstone
	DESIGN UNITS Metric	X.±0.30	X.±5'	CHECKED BY CHERRY	DATE 14/JUN/22	TITLE D-SUB Connector 25Circuits Terminal type Female	
SCALE 5:1	SIZE A4	X.XX±0.25	.XX±1'	DRAWN BY MATT	DATE 14/JUN/22	THIS DRAWING CONTAINS INFORMATION THAT IS PROPRIETARY TO TXGA INDUSTRIAL ELECTRONICS(S.Z)CO.,LTD AND SHOULD NOT BE USED WITHOUT WRITTEN PERMISSION	
		X.XXX±0.10	.XXX±0.5'			REV 1	SHEET NO. 1/1

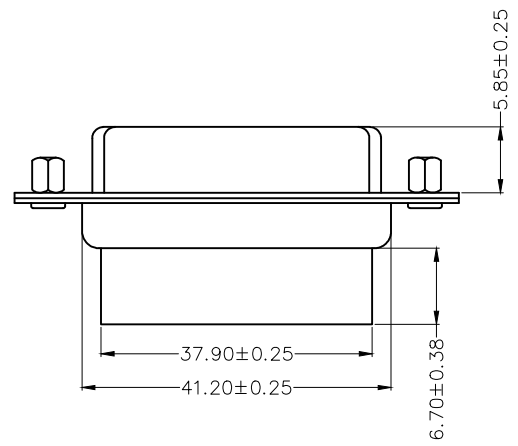
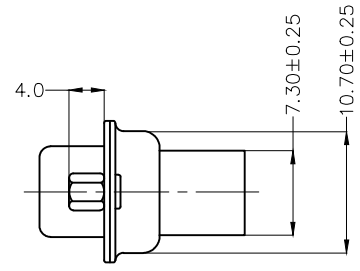
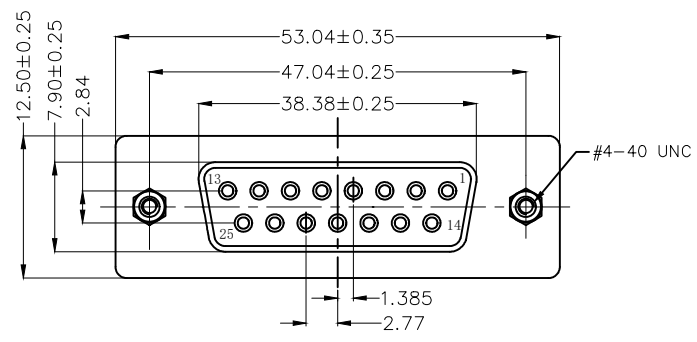
REV	LOCATIONS	DESCRIPTION	DATE	REVISER	APPD
1	▲	Add marking code	13/Jan/25	NICK	LEO



SPECIFICATIONS

Electrical
 Insulation Resistance: 3000 MΩ MIN
 Withstanding Voltage: 250V AC r.m.s
 Temperature Range—Operating: -45°C~+85°C

Material and Plating
 Housing: PBT (UL 94V-0) Black
 Front Shell: Spcc/ Nickel plated
 Back Shell: Spcc/ Tin plated



Ordering Information

FDB 25 08 - F0 T S 0 00 K6 K C
 1 2 3 4 5 6 7 8 9

1	Category FDB- D-SUB	2	Circuits 25	3	Distinction No. 08	4	Type F0-Female	5	Assembly Layout T-Terminal type
6	Entry Angle S-180° Vertical	7	Color-Resin K6-Black	8	Packaging K-Tray	9	Distinction Type C-C Type		

 THIRD ANGLE PROJECTION	GENERAL TOLERANCES (UNLESS SPECIFIED)		APPROVE BY FRANK	DATE 14/JUN/22	PART NO. FDB2508-F0T5000K6KC	ITEM NO. FDB2508	 Building Technology Cornerstone
	DESIGN UNITS Metric	X.±0.30	X.±5'	CHECKED BY CHERRY	DATE 14/JUN/22	TITLE D-SUB Connector 25Circuits Terminal type Female	
SCALE 5:1	SIZE A4	X.XX±0.25	.XX±1'	DRAWN BY MATT	DATE 14/JUN/22	THIS DRAWING CONTAINS INFORMATION THAT IS PROPRIETARY TO TXGA INDUSTRIAL ELECTRONICS(S.Z)CO.,LTD AND SHOULD NOT BE USED WITHOUT WRITTEN PERMISSION	
		X.XXX±0.10	.XXX±0.5'			REV 1	SHEET NO. 1/1